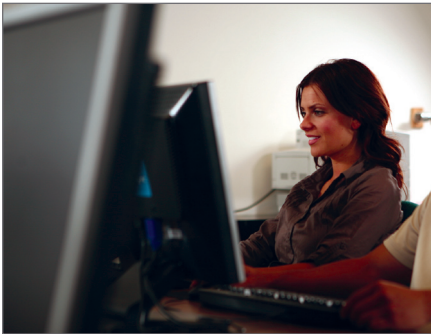




LANDesk® Classroom Manager

Make the most of your IT investment.



Total Control for Student Computing Environments

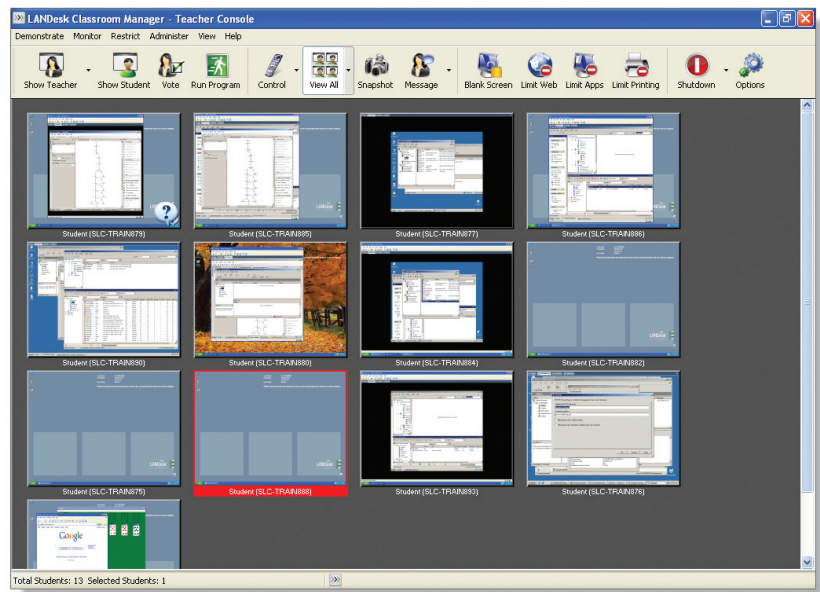
In the classroom, even if your PCs are perfectly managed and available 100% of the time, if the teacher can't monitor and control student use, your technology investment can be wasted, and can even become an impediment to learning.

LANDesk Classroom Manager helps teachers fully leverage your organization's technology investment.

Monitor - Know what your students see. What websites and applications are running on student computers and what websites have been visited by students daily.

Control - Easily and quickly lock-down student computers (mouse, keyboard, and screen). Control exactly which programs and web sites your students can or can't use. Turn all the machines in your lab on or off with just a couple of clicks.

Teach - Broadcast your screen (or a particular student's screen) to the entire class (or any subset thereof). Answer questions via text messages, or initiate a chat session. Take remote control of individual or multiple student systems.



See What Students See

Get complete control over the computer lab all from one view and one console. The Teacher Console shows thumbnail views of student screens so teachers know exactly what students are doing and looking at. A single console can monitor up to 250 student machines. Just knowing somebody's watching helps keep students on task.

Control What Students Do

Teachers can take the following actions to control student computers and enhance teaching in a computerized classroom.

- **Show Teacher:** Broadcasts the teacher's screen to selected students.
- **Show Student:** Broadcasts a student's screen to selected students.
- **Vote:** A quiz template lets the teacher quickly create and distribute true/false and multiple choice questions to assess student understanding. Real-time results are displayed in the Teacher Console.
- **Run Program:** Allows the teacher to open a program or website on selected student computers.
- **Control:** Allows the teacher to remote control selected student computers.
- **View All:** Toggles between thumbnail and list views. List view displays current website and application for all student machines.
- **Snapshot:** Allows the teacher to quickly capture a screenshot of a selected machine to document student use.
- **Message:** Allows the teacher to send a text message to a selected student (as a pop-up in the lower right hand corner of the student's screen), or initiate a chat session with a particular student.
- **Blank Screen:** Blanks selected student screens while locking out mouse and keyboard functionality. Allows teacher to display a customized message to students when screens are blanked.
- **Limit Web:** Allows teacher to block all web activity or allow/prohibit specific websites.
- **Limit Apps:** Allows teacher to define list of approved or prohibited applications.
- **Limit Printing:** Prohibit or allow printing on selected machines.
- **Shutdown:** Powers selected machines off. This option also allows the teacher to power-on selected machines if Wake On LAN is enabled.
- **Other:** Drawing Tool: Draw on screen for emphasis when broadcasting to students. Also, the teacher can easily send and collect student files.



Leverage Your Educational Technology Investment

LANDesk Classroom Manager is easy to install and use, and industry-leading anti-tampering controls mean student's can't disable the program or disrupt the class. Please visit our website at: <http://www.landesk.com/products/ldcm/Index.aspx> to watch a three minute product demo and download a free 30-day trial version of the product.

Key Features

Monitor

- See what your students see.
- View each student screen as a thumbnail image in the Teacher Console.
- Easily keep track of which websites and applications students are accessing.
- Have the ability to monitor up to 250 computers per classroom.
- With one view have a complete idea of what your students are doing to help them stay on task.

Control

- Lock-down selected student computers quickly and easily. Shut down the mouse, keyboard, screen or any combination to keep students' attention.
- Control exactly which programs and websites your students can and can't use.
- Shut down printing privileges. Start them up again just as easily.
- Turn all of the machines in your lab on or off with a few clicks.
- Control every machine from teacher's main console.
- Industry-leading anti-tampering controls make LANDesk® Classroom Manager extremely difficult to disable.

Teach

- Broadcast your screen or any student screen to the entire class, or a subset of the class.
- Answer student questions by text message or initiate a chat session with a particular student.
- While broadcasting, draw on the screen to highlight or emphasize specific points.
- Take remote control of individual or multiple student systems.
- Quickly administer online multiple choice or true/false quizzes to assess comprehension (with real-time results shown in the Teacher Console.)
- Translate your school's technology investment into a superior educational environment.

Visit www.landesk.com for more information.

This information is provided in connection with LANDesk products. No license, express or implied, by estoppel or otherwise, or warranty is granted by this document. LANDesk does not warrant that this material is error free, and LANDesk reserves the right to update, correct or modify this material, including any specifications and product descriptions, at any time, without notice. For the most current product information, visit <http://www.landesk.com>.

Copyright © 2008 LANDesk Software Ltd. or its affiliated companies. All rights reserved. LANDesk, Peer Download, Targeted Multicast and Trusted Access are registered trademarks or trademarks of LANDesk Software Ltd. or its affiliated companies in the United States and/or other countries. Other names or brands may be claimed as the property of others. Each customer's results may vary based on its unique set of facts and circumstances. LSI-0713E 0308/BB/NH

