

## FEATURES

- **Comprehensive and accurate** education-friendly URL database with more than one billion entries.
- **Multiple layers of anonymous proxy detection** and blocking to keep users from bypassing your filter and accessing blocked sites.
- **netTrekker d.i.i. integration** to ensure seamless access to approved netTrekker sites.
- **Protection for school computers outside the network**—without a VPN, from any location, with any type of Internet connection.
- **Flexible filtering for mobile users**, including thin clients, via the Guide Mobile Filter.
- **Access differentiation by user, IP, group, organizational unit, domain.**
- **Peer-to-peer application** and file-type blocking.
- **Daily signature updates**, and immediate emergency updates, directly from Lightspeed Systems.
- **Fast filtering capabilities** can handle even the heaviest traffic loads without hindering speed of access.
- **NEW! The Educational Video Library** allows teachers to share approved YouTube videos with students, providing access to valuable Web 2.0 learning resources without the content risks. Video approval can be delegated to teachers or curricular leaders, and teachers can tag, search, and review approved videos.

## Ensure safe and appropriate web surfing for all users with customizable filtering.

The Internet offers valuable benefits—but is also full of inappropriate and time-wasting content. To comply with federal regulations and Acceptable Use Policies, you have to ensure that students and staff are using school resources for appropriate purposes.

**Lightspeed Web Access Manager** ensures that users' web browsing is in line with Acceptable Use Policies—while they are on the network or when utilizing school computers off the network. Our education-specific database is comprehensive and accurate, ensuring that inappropriate sites are no longer a click away, but that valuable content remains available to users.

### Benefits

**Protects users from inappropriate material on the Internet.** Web Access Manager detects and/or blocks access to inappropriate material on the Internet based on our extensive, education-specific URL database, as well as your own custom allow and block lists.

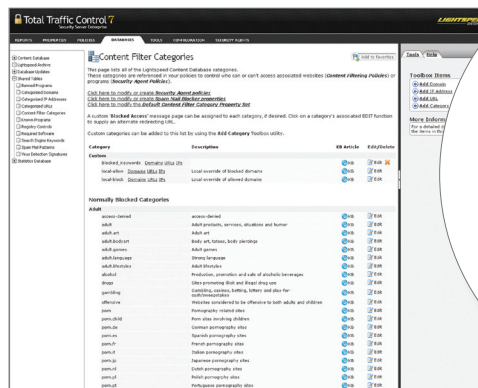
**Keeps searches safe.** Web Access Manager ensures that search results on Google and other popular search engines do not include inappropriate sites or images, such as pornography and sexual content.

**Lets teachers teach and students learn.** Our content filter groups sites into school-specific categories based on subject matter and age-appropriateness, providing easy review and administration. Granular database control ensures that over-blocking doesn't ever hinder teaching.

### Comprehensive, Customizable Reporting

Web Access Manager gives you access to comprehensive information about who is viewing what over your network, so you can adjust Acceptable Use Policies, change allowed usages, review problems and troubleshoot issues, and plan for ongoing needs. You can see a high-level overview of content viewed and blocked, and then drill down for detailed information, with reports like:

- Blocked Content
- Search Engine Queries
- Blocked URLs
- URLs visited
- Traffic by Category
- Overrides (active and history)



Category	Description	URLs	Status
Blocked Content	Blocked Content	1000	On
Search Engine Queries	Search Engine Queries	1000	On
Blocked URLs	Blocked URLs	1000	On
URLs visited	URLs visited	1000	On
Traffic by Category	Traffic by Category	1000	On
Overrides (active and history)	Overrides (active and history)	1000	On

### Normally Blocked Categories



Category	Description	URLs	Status
Adult	Adult	1000	On
access-denied	access-denied	1000	On
adult	adult	1000	On
adult.art	Adult art	1000	On
adult.bodyart	Body art	1000	On
adult.games	Adult game	1000	On
adult.language	Strong lang	1000	On
adult.lifestyles	Adult lifestyle	1000	On
alcohol	Production	1000	On
drugs	Sites prom	1000	On
gambling	Gambling	1000	On
offensive	cash/sw	1000	On
porn	Website	1000	On
porn.child	Porn	1000	On
porn.de	Porn	1000	On
porn.es	Porn	1000	On



## Exceptional Service and Support

Our feature-rich solutions designed specifically for schools are the answer to your network management and security needs. But our unparalleled service and support mean our solutions will continue to deliver, long after their easy implementation. With any Lightspeed Systems solution, you can depend on:

- 24/7 live-person phone technical support.
- Comprehensive online knowledge bases.
- The Lightspeed Wiki, rife with user collaboration and product expertise.

## Professional Development and Training

### Professional Services:

We provide customized, collaborative professional development services to address your specific needs. For more information, please contact: [ps@lightspeedsystems.com](mailto:ps@lightspeedsystems.com)

### Training:

To help you fully leverage your investment in Lightspeed Systems solutions, we offer an array of training options.

- Online introductory training and user demonstration videos
- Administrator certification
- Regional training throughout the U.S.

Learn more about comprehensive, innovative solutions for schools at [www.lightspeedsystems.com/products](http://www.lightspeedsystems.com/products)

## Comprehensive Solutions for Your School

Monitor, manage, secure, and control your school network with Lightspeed Systems comprehensive solutions:



### Lightspeed Total Traffic Control

**Lightspeed Total Traffic Control** gives schools best-of-breed network management and security with a single comprehensive solution.



### Lightspeed Email Manager

Lightspeed Email Manager allows you to archive, report on, and manage communications, while controlling spam and email viruses.



### Lightspeed Network Traffic Manager

Lightspeed Network Traffic Manager lets you maintain network availability and performance with traffic and bandwidth management.



### Lightspeed Security Manager

Lightspeed Security Manager eliminates threats from viruses, spyware, and malware with desktop and gateway security.



### Lightspeed Power Manager

Lightspeed Power Manager allows you to manage network energy costs with automated energy conservation.

## About Lightspeed

Lightspeed Systems Inc., founded in 2000, develops comprehensive network security and management solutions for the education market. We are committed to helping schools operate their networks effectively and efficiently, so educators can provide safe online teaching and learning environments.

Our software is used in more than 1,000 school districts in the United States, the United Kingdom, and Australia to protect more than 5 million students. For the past two years, Lightspeed Systems has been recognized on the Inc. 5,000 list as one of the fastest-growing private companies.

## Contact Us

Learn more about our products and services at [www.lightspeedsystems.com](http://www.lightspeedsystems.com)

## We Welcome Your Calls and Emails

Lightspeed Systems  
1800 19<sup>th</sup> Street  
Bakersfield, CA 93301

Main: 877.447.6244

Support: 800.444.9267

Sales: [sales@lightspeedsystems.com](mailto:sales@lightspeedsystems.com)

Support: [support@lightspeedsystems.com](mailto:support@lightspeedsystems.com)

See the powerful reporting, policy creation, and customization features of Total Traffic Control, and our component solutions, for yourself. Schedule an online demonstration: [www.lightspeedsystems.com/demo](http://www.lightspeedsystems.com/demo)





Allows teachers to safely share approved YouTube videos in the classroom.

**Provides easy use and administration.** Network administrators designate teachers and staff who may submit and/or approve videos for sharing. Contributors simply enter a URL, without the need for time-consuming video uploads and downloads. As part of the submission process, videos are categorized and tagged, for easy searching. And video approval is easily performed within the Lightspeed interface within the Lightspeed console or via a Web interface.

- Approved Video report shows all approved videos, as well as who submitted them, when they were submitted, and who approved them.
- Administrators can easily set permissions for who can submit and approve videos.
- Videos are streamed directly from YouTube; no videos are stored on local servers.
- Optionally share your videos with other Lightspeed customers and/or get shared videos from other Lightspeed customers.
- View list of approved videos by category or tag.
- Easy management from within the Lightspeed console, or via the Web.
- Organize approved videos into content categories: Science, Language Arts, World Languages, Philosophy & Religion, Technology, Current Events, Social Studies, Mathematics, Health & Physical Ed., The Arts, Career & Technical Ed., Reference Tools.
- Easy mass import of up to 1000 videos of a YouTube channel.

Lightspeed is committed to helping schools ensure a safe educational environment while maximizing Web 2.0 learning opportunities.

The Lightspeed Educational Video Library allows teachers to share approved YouTube videos with students without content concerns.



## Exceptional Service and Support

Our feature-rich solutions designed specifically for schools are the answer to your network management and security needs. But our unparalleled service and support mean our solutions will continue to deliver, long after their easy implementation. With any Lightspeed Systems solution, you can depend on:

- 24/7 live-person phone technical support.
- Comprehensive online knowledge bases.
- The Lightspeed Wiki, rife with user collaboration and product expertise.

## Professional Development and Training

### Professional Services:

We provide customized, collaborative professional development services to address your specific needs. For more information, please contact: [ps@lightspeedsystems.com](mailto:ps@lightspeedsystems.com)

### Training:

To help you fully leverage your investment in Lightspeed Systems solutions, we offer an array of training options.

- Online introductory training and user demonstration videos
- Administrator certification
- Regional training throughout the U.S.

Learn more about comprehensive, innovative solutions for schools at [www.lightspeedsystems.com/products](http://www.lightspeedsystems.com/products)

## Comprehensive Solutions for Your School

Monitor, manage, secure, and control your school network with Lightspeed Systems comprehensive solutions.

**The Educational Video Library is included with Web Access Manager and Total Traffic Control.**



## Lightspeed Total Traffic Control

**Lightspeed Total Traffic Control** gives schools best-of-breed network management and security with a single comprehensive solution.



### Lightspeed Email Manager

Lightspeed Email Manager allows you to archive, report on, and manage communications, while controlling spam and email viruses.



### Lightspeed Network Traffic Manager

Lightspeed Network Traffic Manager lets you maintain network availability and performance with traffic and bandwidth management.



### Lightspeed Security Manager

Lightspeed Security Manager eliminates threats from viruses, spyware, and malware with desktop and gateway security.



### Lightspeed Web Access Manager

Lightspeed Web Access Manager ensures safe and appropriate web surfing both on and off the network with customizable filtering, content prioritization, and effective proxy blocking.



### Lightspeed Power Manager

Lightspeed Power Manager allows you to manage network energy costs with automated energy conservation.

## About Lightspeed

Lightspeed Systems Inc., founded in 2000, develops comprehensive network security and management solutions for the education market. We are committed to helping schools operate their networks effectively and efficiently, so educators can provide safe online teaching and learning environments.

Our software is used in more than 1,000 school districts in the United States, the United Kingdom, and Australia to protect more than 5 million students. For the past two years, Lightspeed Systems has been recognized on the Inc. 5,000 list as one of the fastest-growing private companies.

## Contact Us

Learn more about our products and services at [www.lightspeedsystems.com](http://www.lightspeedsystems.com)

## We Welcome Your Calls and Emails

Lightspeed Systems  
1800 19<sup>th</sup> Street  
Bakersfield, CA 93301

Main: 877.447.6244

Support: 800.444.9267

Sales: [sales@lightspeedsystems.com](mailto:sales@lightspeedsystems.com)

Support: [support@lightspeedsystems.com](mailto:support@lightspeedsystems.com)

See the powerful reporting, policy creation, and customization features of Total Traffic Control, and our component solutions, for yourself. Schedule an online demonstration: [www.lightspeedsystems.com/demo](http://www.lightspeedsystems.com/demo)



## Lightspeed Guide Mobile Filter



An innovative new feature in Lightspeed Web Access Manager and Total Traffic Control.

## Extends policies and protection with flexible filtering when computers are off the network.

When school computers leave the network, both the computers and the users can be exposed to harmful content and safety and security risks. Mobile Internet filtering reduces the cost, downtime, and frustration associated with computers that have a tendency to be compromised while off the network. Whether your mobile users are part of a 1:1 initiative or just staff bringing laptops on and off the network, the Guide Mobile Filter will protect them and enforce your Acceptable Use Policies.

### Benefits

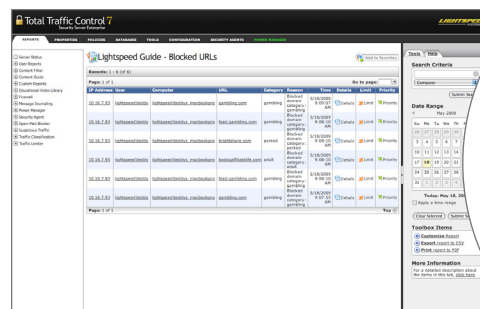
**Extends policies and protection to off-network computers.** Your Acceptable Use Policies protect both your users and your equipment. Laptops taken off the network are often free from the content filtering used within the network, opening users up to inappropriate content and equipment to dangerous web sites. The Guide Mobile Filter delivers flexible filtering for off-network computers, ensuring that blocked sites remain blocked—no matter from where the computer is being used.

**Keeps users safe with comprehensive filtering.** The Guide Mobile Filter detects and/or blocks access to inappropriate material on the Internet based on our extensive, education-specific URL database, as well as your own custom allow and block lists, helping to ensure user safety and CIPA compliance.

**Reduces the cost, time, and frustration of compromised computers.** By blocking sites known as threats for spyware, malware, and viruses, the Guide Mobile Filter helps keep your school computers secure and safe when they are off the network, helping to keep computers clean and functioning properly.

### Features

- CIPA-compliant Internet filtering for mobile computers.
- Reporting of off-network activity, including Blocked URLs, Blocked URLs by Category, Unknown URLs, URLs Visited.
- Ability to block all forms of proxy servers (anonymous and secure).
- Forced SafeSearch for Google and Yahoo search engines.
- Local policy control (Active Directory and LDAP).
- Password-protected uninstall.
- Full support for PCs and Macs.
- Works from any location, with any type of Internet connection—without the need for a VPN.

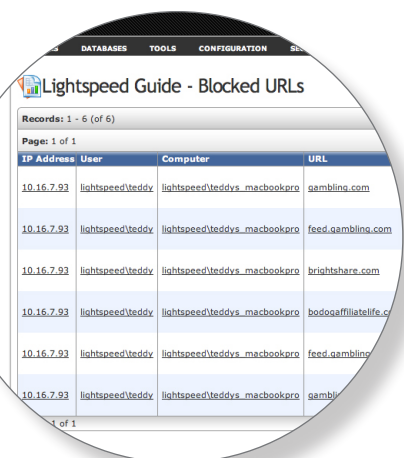


The Guide Mobile Filter provides flexible filtering for mobile users, and offers reporting on off-network Internet activity.

### How the Guide Mobile Filter Works

The Guide Mobile Filter communicates Internet-browser requests from the mobile computer to a Lightspeed server at the district. In turn, the Lightspeed server references the URL requests with its content database and either allows the request to be processed or sends a blocking and redirect message to the user.

In this way Acceptable Use Policies are consistently enforced for users alternately attached to the local network and working remotely. The Guide Mobile Filter protects off-network computers from any location, with any type of Internet connection—without the need for a VPN connection.







## Exceptional Service and Support

Our feature-rich solutions designed specifically for schools are the answer to your network management and security needs. But our unparalleled service and support mean our solutions will continue to deliver, long after their easy implementation. With any Lightspeed Systems solution, you can depend on:

- 24/7 live-person phone technical support.
- Comprehensive online knowledge bases.
- The Lightspeed Wiki, rife with user collaboration and product expertise.

## Professional Development and Training

### Professional Services:

We provide customized, collaborative professional development services to address your specific needs. For more information, please contact: [ps@lightspeedsystems.com](mailto:ps@lightspeedsystems.com)

### Training:

To help you fully leverage your investment in Lightspeed Systems solutions, we offer an array of training options.

- Online introductory training and user demonstration videos
- Administrator certification
- Regional training throughout the U.S.

Learn more about comprehensive, innovative solutions for schools at [www.lightspeedsystems.com/products](http://www.lightspeedsystems.com/products)

## Comprehensive Solutions for Your School

Monitor, manage, secure, and control your school network with Lightspeed Systems comprehensive solutions.

**The Guide Mobile Filter is included with Web Access Manager and Total Traffic Control.**



## Lightspeed Total Traffic Control

**Lightspeed Total Traffic Control** gives schools best-of-breed network management and security with a single comprehensive solution.



## Lightspeed Email Manager

Lightspeed Email Manager allows you to archive, report on, and manage communications, while controlling spam and email viruses.



## Lightspeed Network Traffic Manager

Lightspeed Network Traffic Manager lets you maintain network availability and performance with traffic and bandwidth management.



## Lightspeed Security Manager

Lightspeed Security Manager eliminates threats from viruses, spyware, and malware with desktop and gateway security.



## Lightspeed Web Access Manager

Lightspeed Web Access Manager ensures safe and appropriate web surfing both on and off the network with customizable filtering, content prioritization, and effective proxy blocking.



## Lightspeed Power Manager

Lightspeed Power Manager allows you to manage network energy costs with automated energy conservation.

## About Lightspeed

Lightspeed Systems Inc., founded in 2000, develops comprehensive network security and management solutions for the education market. We are committed to helping schools operate their networks effectively and efficiently, so educators can provide safe online teaching and learning environments.

Our software is used in more than 1,000 school districts in the United States, the United Kingdom, and Australia to protect more than 5 million students. For the past two years, Lightspeed Systems has been recognized on the Inc. 5,000 list as one of the fastest-growing private companies.

## Contact Us

Learn more about our products and services at [www.lightspeedsystems.com](http://www.lightspeedsystems.com)

## We Welcome Your Calls and Emails

Lightspeed Systems  
1800 19<sup>th</sup> Street  
Bakersfield, CA 93301

Main: 877.447.6244

Support: 800.444.9267

Sales: [sales@lightspeedsystems.com](mailto:sales@lightspeedsystems.com)

Support: [support@lightspeedsystems.com](mailto:support@lightspeedsystems.com)

See the powerful reporting, policy creation, and customization features of Total Traffic Control, and our component solutions, for yourself. Schedule an online demonstration: [www.lightspeedsystems.com/demo](http://www.lightspeedsystems.com/demo)

