



The Guide to Apple iOS Deployment in Education



So your school is about to launch an iPad program, and you're not sure where to start? That's where the Apple Management Experts can help. Since 2002, JAMF Software—and our Casper Suite solution—have helped schools across the globe ensure their Apple programs are a success.

In this guide, we'll highlight the steps needed to get a 1:1 iPad program up and running using the Casper Suite and Apple's user-friendly deployment programs.

Follow these **5 steps** to success.

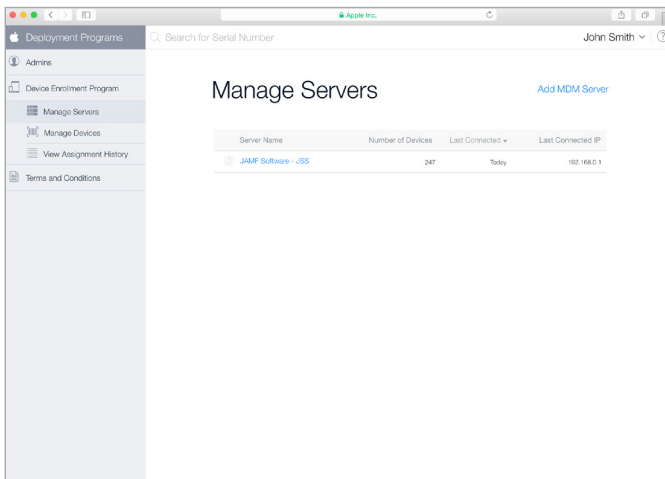




Prepare

1. Sign up for Apple's Device Enrollment Program (DEP) and Volume Purchase Program (VPP)

- › Enroll your school at deploy.apple.com.
- › Get your Apple Customer Number from Apple or your Reseller - this is required for DEP.
- › Use a shared email address for your Apple ID (ex: appleid@school.org).
- › Define who has access to the DEP portal page via Admin setting within the DEP site.



2. Consider your Apple ID strategy

- › For 1:1 deployments, an individual Apple ID per student is recommended.
- › Apple IDs are not mandatory, but they greatly enhance the features of iPad for students.
- › Apple IDs require an email address, so consider using a student's school or personal email.
- › Students over 13 can create a new Apple ID during the setup of the iPad or [here](#).
- › For Students under 13, sign up for Apple's [Under 13 Apple ID](#) program and follow the instructions.

3. Ensure stable Wi-Fi and networking

- › Strong Wi-Fi and modern networking are critical for a successful deployment. Make sure your school has enough bandwidth and wireless routers to handle all your new devices.
- › The Casper Suite needs to communicate to your devices over the internet for management.
- › You will need to select how you plan to host the Casper Suite on your network (see below).

4. Link Casper Suite to DEP

- › Add the Casper Suite as your MDM server via "Manage Servers" on the DEP site.
- › You will need to download a public key from the JAMF Software Server JSS and a Server Token from the DEP site. Details on this step can be found [here](#).
- › Once linked, you can assign new devices to be managed by serial or order number on the DEP site.



What is the Casper Suite?

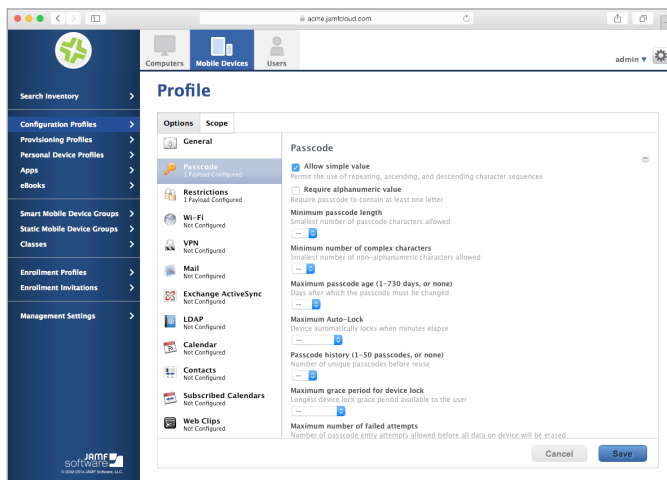
- › The Casper Suite is a collection of Mac and iOS management tools.
- › The core of the suite is the JAMF Software Server (JSS) that acts just like a web server.
- › The [JSS can be hosted](#) on any existing OS X, Windows, or Linux server on-premise.
- › JSS hosting is also offered via our JAMF Cloud subscription.

Step 2

Configure

1. Build your Configuration Profiles

- › Configuration Profiles are XML files that act like a recipe for your device settings and are deployed via the Casper Suite.
- › Build your profile ingredients in the JSS with settings such as: Wi-Fi, Email, and VPN.
- › Profiles can also contain security settings and restrictions.
- › Consider building different profiles for different groups of students.



2. Supervise your devices

- › Supervision allows for a higher level of management, including locking the MDM profile so students can't erase it or jailbreak the iPad.
- › Supervision enables teacher usage of Casper Focus, to enhance classroom management.
- › Supervision can be done automatically via DEP and configured in the JSS (see next step).
- › Alternatively, you can manually supervise an iPad via Apple Configurator over USB.

3. Configure the Casper Suite for Initial Setup Options

- › The PreStage Enrollment Settings in the JSS lets you define how the device behaves upon the first boot up.
- › From here, select options to supervise devices, lock profiles, and skip startup steps.
- › Additionally, you can assign students to iPads via directory services authentication.



What about Apple TV?

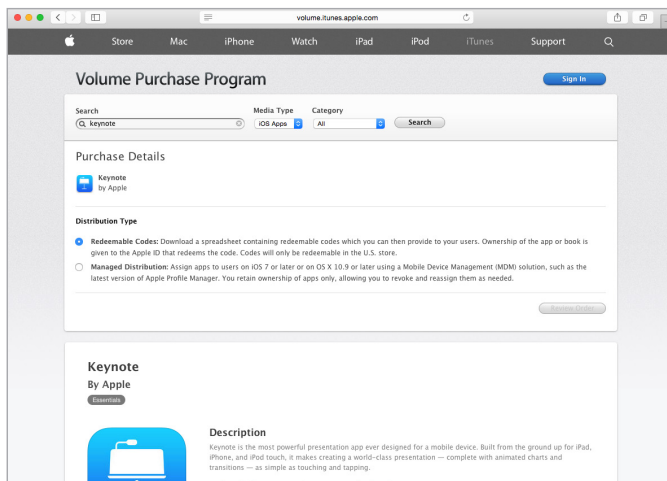
- › Apple TVs are a great way to share content using a TV or projector.
- › Apple TV can be managed like an iPad using the Casper Suite.
- › Enroll each one manually via Apple Configurator.
- › Using Casper Focus (see Manage), a teacher can mirror a student's iPad to the Apple TV for easy content sharing.



1. Purchase apps and books using Apple's Volume Purchase Program (VPP)

There are two ways to purchase and distribute content:

- › **Managed Distribution (recommended):**
License the content to your users. You retain ownership of apps (but not books), allowing you to revoke and reassign them as needed.
- › **Redeemable codes:** Download a spreadsheet containing redeemable codes that you can then provide to your users. This method permanently transfers an app or book to the Apple ID that redeems the code.



2. Invite your users

- › Managed Distribution requires iOS 7 or higher devices.
- › Create a VPP invitation within the JSS and scope to desired users.
- › Users accept your VPP invitation and gain access to the content you have assigned them.
- › Details on the process are [here](#).

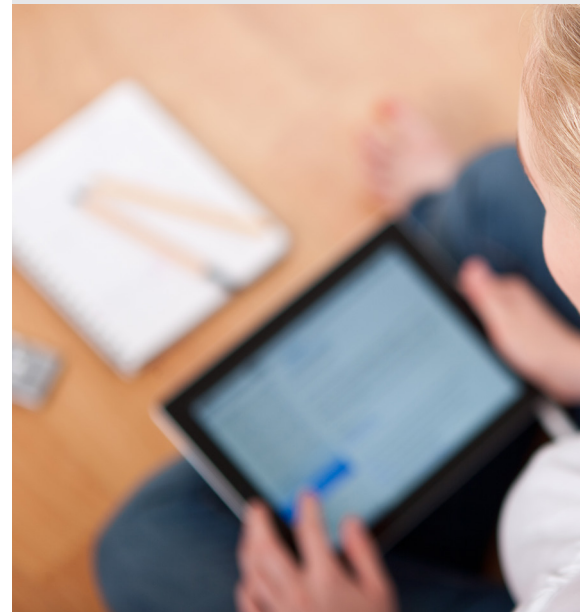
3. Consider your app deployment strategy

- › Use the Casper Suite Self Service app for user-initiated App install.
- › Silently push apps to students.
- › Scope apps to different classes via groups for easy distribution.



What is Self Service?

- › Self Service is an App that acts like an internal App Store for your school.
- › Self Service can contain Apps linked to VPP, free Apps, eBooks, PDFs, and Configuration Profiles.
- › If you disable the App Store, Self Service can serve as a white list for approved Apps.



1. Make a plan for handing out devices to students

Consider multiple stations in the gymnasium or media center that offers a logical flow:

1. Getting started station: Great for orientation and registration.
2. Apple ID creation station: See previous Apple ID Strategy step.
3. Forms station: Acceptable Use Policy, Student Pledge, Passwords, etc.
4. Pick-up station to unbox and boot up the iPad.
5. Accessories station for cases, chargers, etc.
6. Enrollment and VPP station to verify enrollment and VPP invitation.

2. Enroll your devices

Device management begins with enrolling a device. Choose from one of these methods:

- › User Initiated Enrollment via webpage or email invitation.
- › Apple Configurator enrollment via USB.
- › Automatic enrollment using Apple’s Device Enrollment Program (recommended).

3. Boot up devices

- › DEP linked iPads will automatically enroll with the JSS.
- › Configuration profiles, Apps, and Books will automatically download from the JSS.
- › Self Service will appear.

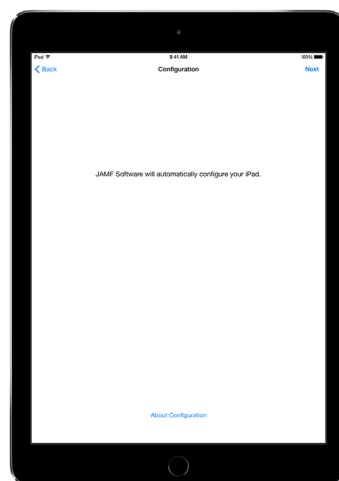


Additional logistics to consider

- › Time slots for students will help you control the flow of handing out devices.
- › T-shirts for staff and volunteers are a simple way for students to know who to go to for help
- › Train your staff and volunteers to troubleshoot common enrollment and VPP invite issues.
- › Don't forget to account for the large number of empty cardboard boxes and packaging.



User-initiated enrollment



DEP enrollment



Step 5

Manage

1. Enable your end users, give control to IT

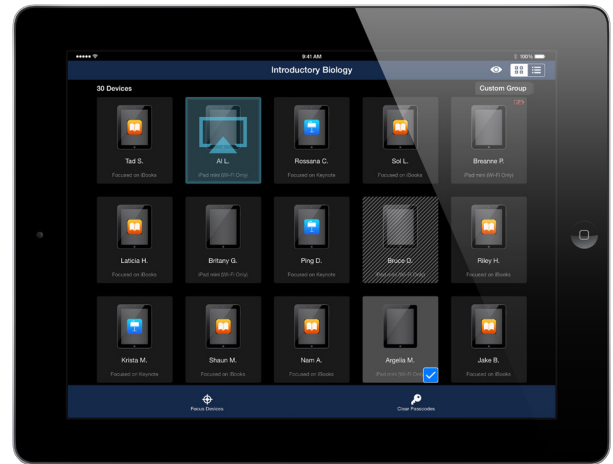


- › Update Self Service with new content to encourage usage.
- › Leverage Push Notifications to push communications directly to devices.
- › Customize the JSS with smart groups and advanced reporting.

2. Setup Casper Focus for classroom management



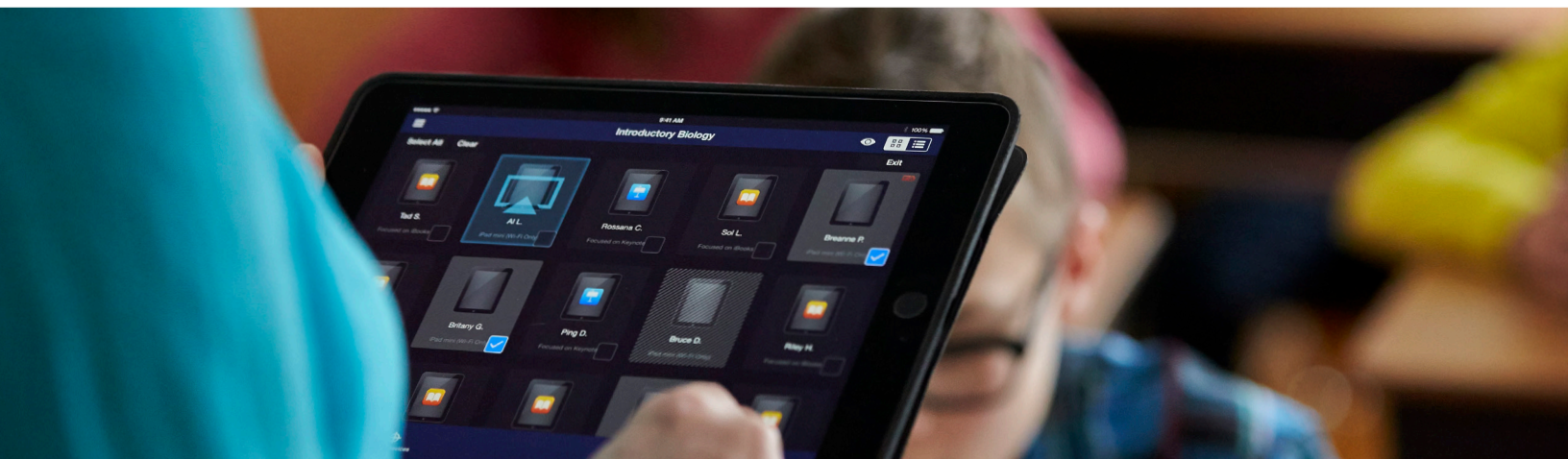
- › Casper Focus is a free app that comes with the Casper Suite and runs on the teachers iPad.
- › Casper Focus allows teachers to lock student's iPads to a single App or website.
- › Additionally, teachers can mirror iPads to an Apple TV and distribute eBooks to students.
- › Detailed setup instructions for Casper Focus can be found [here](#).



3. Join JAMF Nation for ideas on how to improve your deployment



- › JAMF Nation is a knowledgeable community of Casper Suite users helping each other.
- › This is a free service, open to all, whether you are a JAMF Software customer or not.
- › Learn from other schools that have already deployed iPads and gain best practices.



Still have questions? We're happy to help.

JAMF Software
301 4th Ave S
Minneapolis, MN 55415 -1039

Phone: (612) 677-7075
www.jamfsoftware.com
info@jamfsoftware.com

